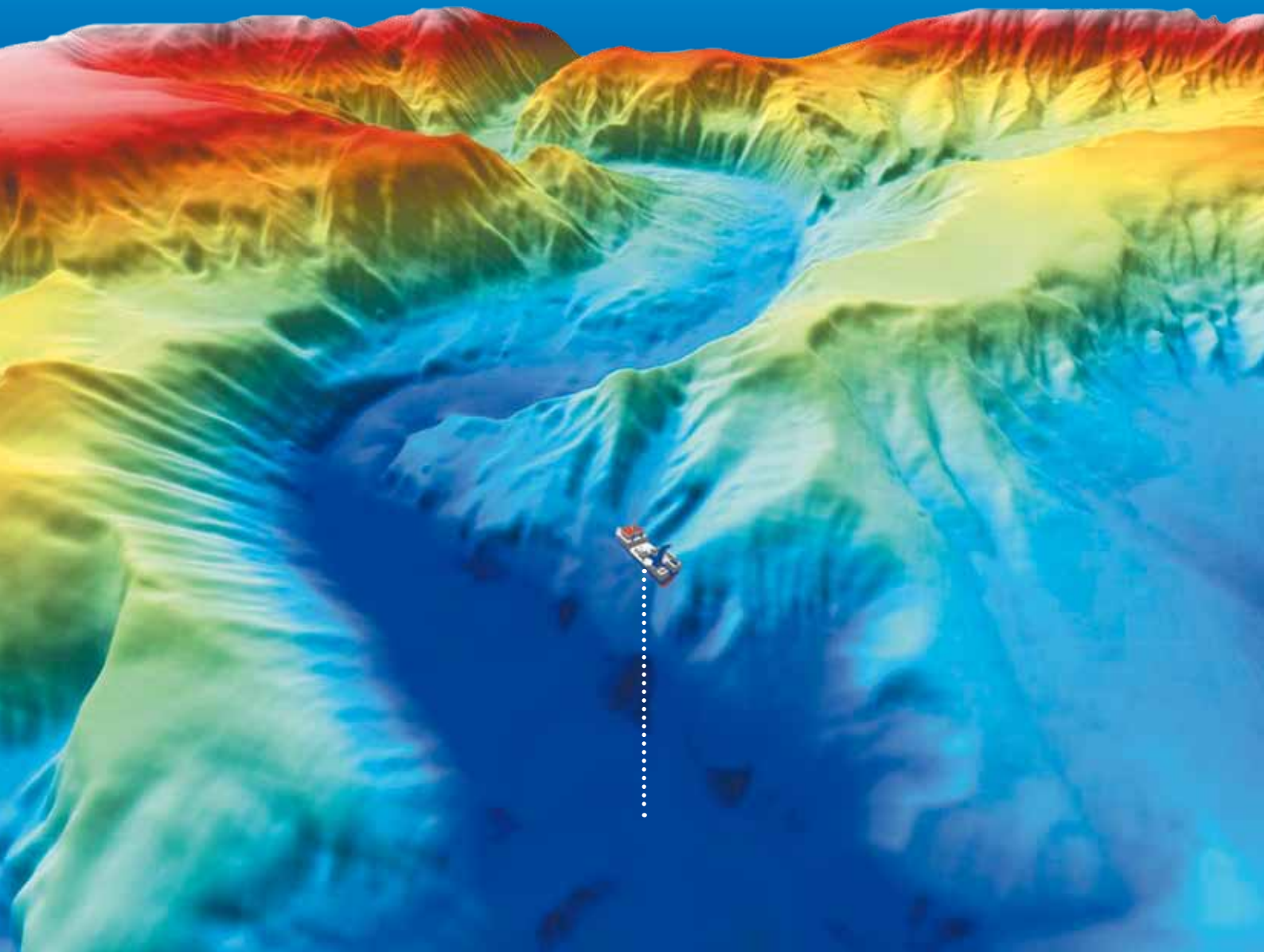
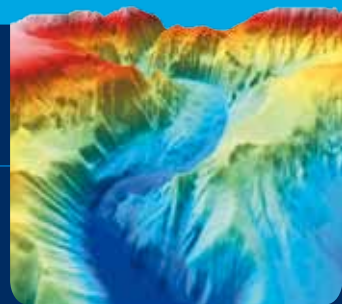


More Fish Less Time



PISCATUS^{3D}

SUPERIOR SEABED VISION



Piscatus^{3D} delivers a real time 3D view of the ocean floor anywhere in the world, helping you to make the best decisions to catch more fish faster.

PISCATUS^{3D} OVERVIEW

Piscatus^{3D} is a comprehensive 3-Dimensional fishing tool that displays in superior detail, exactly what is happening underwater in real-time as you fish. With an interface designed by fishermen for ease of use, view your underwater fishing grounds as never before. Piscatus^{3D} shows your boat, the seabed, the target fish and your fishing gear. Built on a stable and reliable technology platform, Piscatus^{3D} automatically saves your data as you fish. Piscatus^{3D} is available in three customised applications designed specifically for your fishing operations: Inshore-Pro, DeepSea-Pro and Piscatus Classic.

INSHORE-PRO

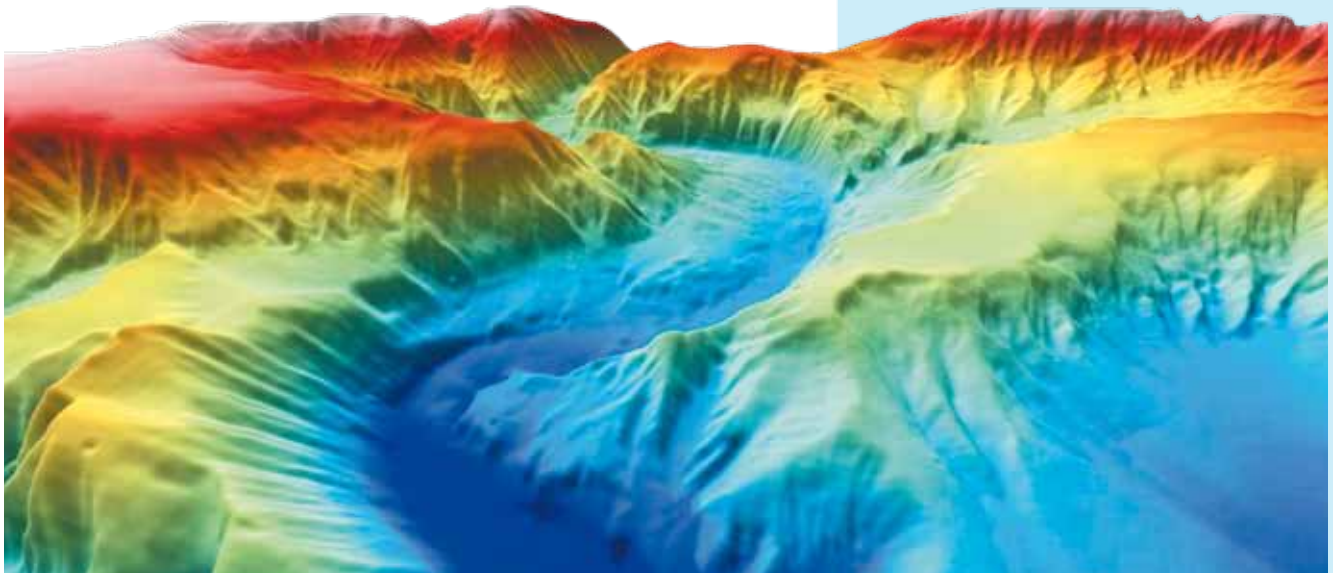
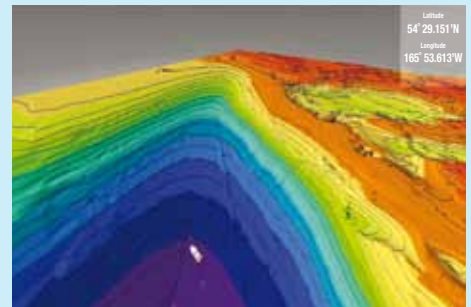
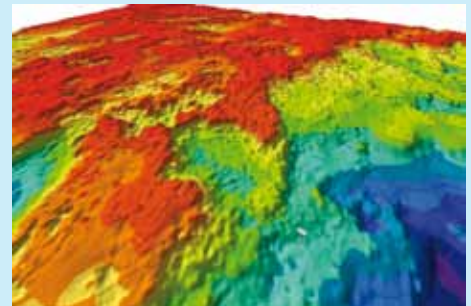
Inshore-Pro is designed to operate most effectively with small to medium sized vessels working in depths of up to 600M. Data collection and display in Inshore-Pro provides highly detailed 3D maps for these inshore depths and allows the user to view smaller areas.

DEEPSEA-PRO

Designed for the “big boys” of the sea, DeepSea-Pro provides detailed 3-Dimensional maps of the seafloor in real-time for depths well over 2000M. A comprehensive data filtering and storage system provides for large amounts of data collected in greater depths. View stunning 3D maps of the seafloor in real-time.

PISCATUS CLASSIC

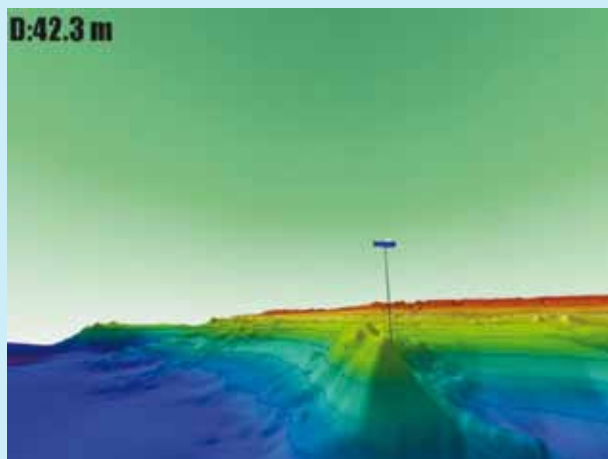
Piscatus^{3D} Classic is designed for recreational fishing, lowering the computer specifications required from the professional versions. With Piscatus^{3D} Classic fisherman at sea or on a lake can accurately map their favourite fishing grounds and enjoy the hunt of fishing.



FEATURES

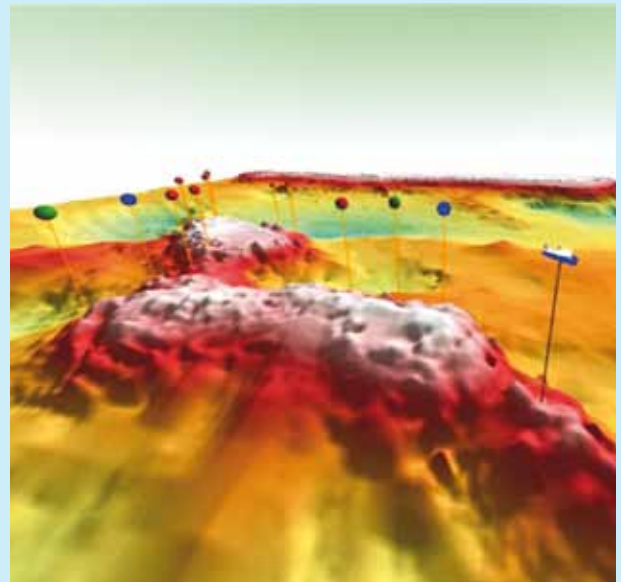
BATHYMETRY NOW

BathymetryNow is a real-time dynamic mapping engine that integrates the supplied bathymetry database with GPS, echo sounding and seabed discrimination data from your vessel. As your vessel moves across the sea surface, new information is filtered, groomed, fitted and contoured, updating and refining your map to **create a uniquely detailed 3-Dimensional view of what lies below**. Instantly you get a much clearer understanding of already familiar grounds and a much faster appreciation of new grounds.



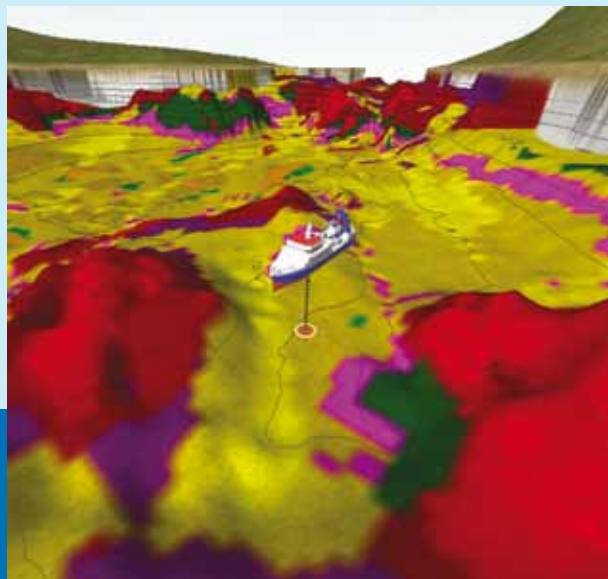
SEE YOUR FISHING GEAR

Whether you are trawling, netting, lining or potting, Piscatus^{3D} unique viewing angles, marks and lines enable you to easily and accurately track your vessel's course over the fishing grounds and to **mark the location of your long-lines, nets and pots** in 3 dimensions.



HARDNESS & ROUGHNESS

Piscatus^{3D} Pro versions integrate with the world's most popular seabed discrimination devices, including RoxAnn GD, SeaScan and the JRC JFC130. With these devices and Piscatus^{3D} you can map hardness and roughness changes in the seabed and **view accurate ground discrimination in 3D showing areas of mud, sand, rock, weed and many other seafloor classifications**.



FLEXIBLE PLOTTER INTERFACE

Piscatus^{3D} can be used as a stand-alone mapping application or with an existing plotter using the built-in flexible plotter interface. This interface allows key features to be shared from your plotter using dual screens or split-screen options. Shared key features include: map location, ghost cursor, lines, marks, bathymetry contours and net position. Piscatus^{3D} currently integrates with C-Plot Pro and SeaPlot Pro commercial plotter systems.



REALVIEW

RealView allows you to view your fishing grounds as though you are flying above the boat or swimming behind the trawl. This feature **offers multiple camera views to visualise what you want to see**, the way you want to see it. Zoom in or out, see the land and seabed below the surface – a real-time virtual reality.



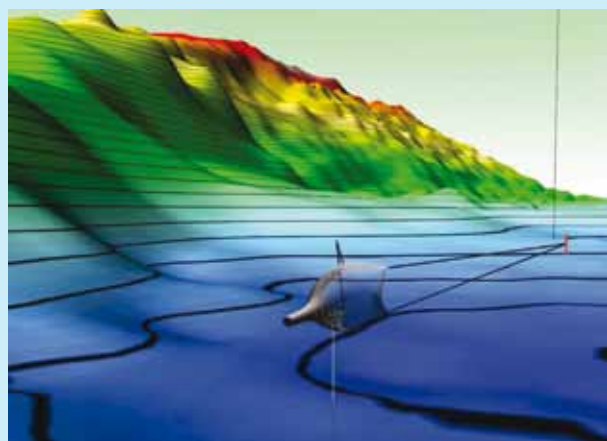
GLOBAL BATHYMETRY

Piscatus^{3D} removes the need to comprehensively cover an area to get a complete map. Missing contours are predicted and included so that you are always working with a continuous environment. Recognising that there can be errors in GPS and soundings data, **Piscatus^{3D} automatically filters erroneous data** so there is no need to constantly monitor the database. Any surviving glitches can be quickly identified and deleted manually.



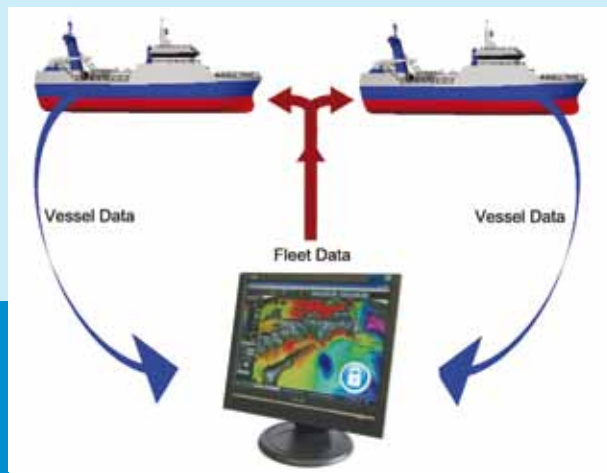
VIRTUALNET

VirtualNet provides your net's position in real-time using true scale net models (select from bottom trawl, mid-water or twin-rig). Enter wire and sweep lengths, set your starboard or port offset and VirtualNet displays the position of your trawl gear in relation to the seabed. Alternatively you can input these data directly from existing net monitoring equipment such as the Furuno CN22, Simrad ITI and Pacha systems. VirtualNet allows you to view upcoming subsurface obstacles before they become a problem. Even drive your net onto the fish!



DATASAFE

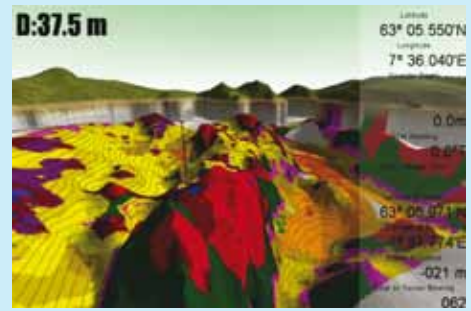
DataSafe uses encrypted data security to enable you to fish securely in the knowledge that no one else will be able to access your valuable fishing ground data. Fully encrypted, the database will only operate on your computer. Any unauthorised removal of data will be ineffective as the data will be unusable. A component of DataSafe is FleetManager which allows you to **back up, merge and share data from fishing grounds across an entire fleet**. This is done safely and securely without the worry of anyone obtaining your maps or data.



PRODUCT INTEGRATION

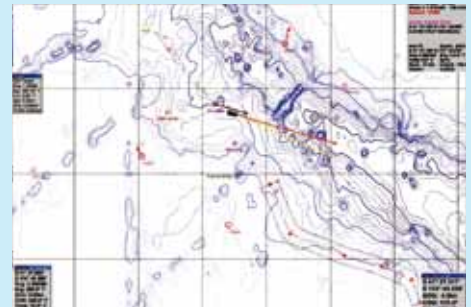
ROXANN

Piscatus^{3D} seamlessly integrates with the SonaVision product RoxAnn GD. RoxAnn GD uses a patented technique to extract data on bottom roughness and hardness from the first and second echosounder returns from the seabed. When integrated with Piscatus^{3D}, RoxAnn data is displayed like never before in a detailed 3-Dimensional format for accurate and easy interpretation. *See in stunning 3D the roughness and hardness of your fishing grounds* to help with fish location.



SEAPLOT PRO

Integration between Piscatus^{3D} and SeaPlot Pro allows *key features to be shared from your plotter using dual screens* or split-screen options. Shared key features include: map location, ghost cursor, lines, marks, bathymetry contours and net position. Recognised worldwide as a leading PC based plotting application, SeaPlot Pro has been developed with input from some of the world's most experienced and skilled fishing skippers.



SIMRAD ITI

Simrad ITI allows you to monitor the exact position of the gear and what is happening in and around the trawl, providing crucial information for effective, profitable and responsible fishing. When integrated with Piscatus^{3D}, the *telemetry collected from your ITI system is used to display your net position in 3D* providing a view of your fishing gear like you have never seen before.



C-PLOT PRO

Sharing key features between Piscatus^{3D} and your C-Plot Pro plotter has never been easier. Displayed together either on split-screen formation or dual screens, *with the click of a button you will see your marks, tow lines and gear position in 3D*. C-Plot Pro for Windows is a computer based chart display/plotting system, designed and manufactured by TMQ Electronics, Australia.



“I personally guarantee that Piscatus^{3D} can put more fish in your hold, faster and more efficiently than ever before”

George Clement, Managing Director,
Piscatus Ltd, Marine Biologist,
Fisheries Management Scientist.

TESTIMONIALS

REVOLUTIONARY

This software has revolutionised the way we fish. We see more detail than ever before and can now fish areas that we didn't know we could. We truly do catch more fish in less time.

Gary Hanson - Skipper "FV Golden Dawn" - Trident Seafoods Corp. Seattle Washington



IMPRESSIVE

The combination of Piscatus^{3D} with Roxann is the best equipment made for fishermen since the echosounder. The 3D graphics are the most impressive that I have ever seen on a fishing vessel.

Skipper - 51M Long Liner - Norway



ACCURATE

The best features of Piscatus^{3D} include the ability to zoom and rotate/pan view of accurately mapped bottom features. We find this most useful when identifying sometimes subtle structure in otherwise featureless areas that hold fish and baitfish. I would recommend Piscatus^{3D} to any keen sport fisherman or charter boat owner.

Gregg Mariuz - Skipper - Profishient Charters LLC - Lake Michigan - USA



SOLID INVESTMENT

The detail in Piscatus has helped us identify fishing grounds that we would never have fished before. A solid investment for any skipper looking to catch more fish.

Peter Connolly - Skipper "FV Rehua" Sealord Group Ltd - New Zealand



EFFICIENT

This is the best equipment we have onboard and we earned back the cost of it in a few months. The combination of Piscatus^{3D} and RoxAnn helps us place our nets more accurately and efficiently.

Skipper - 10M Net Boat - Norway



FREE DEMO DVD

See the Piscatus^{3D} software in action on this free demo DVD and learn why Piscatus^{3D} is regarded worldwide as an essential fishing tool. This DVD will automatically play in any DVD player or DVD computer drive.

Watch in amazement as our built-in bathymetry simulator creates detailed 3D seafloor maps before your eyes.

See high level 3-Dimensional detail like never before as this demo shows how to place your fishing gear with more accuracy and efficiency. See the simulated fishing grounds from several camera angles and viewing perspectives.

Learn how you can share data between vessels in your fleet with the Piscatus^{3D} Fleet Manager application with secure data management systems.

Ask your dealer how you can learn more about Piscatus^{3D} and how it can give you an advantage over the competition.

DVD FEATURES

- Real-Time mapping simulation
- Setting and retrieving gear
- Trawl position simulation
- Plotter Integration
- Secure Data sharing



www.piscatus.co.nz



Improve your fishing experience and results with Piscatus^{3D}

TECHNICAL DATA

Piscatus^{3D} will take information directly from a Furuno CN22/24, Scanmar Depth Sensor, Simrad ITI, NetView 3D, most sounders and any GPS. Compatible with hardness/roughness output of JRC JFC130, SeaScan or the recommended RoxAnn GD system.

VERSION 5.0 SUPPORTS

C-Plot Pro Version 8 and up
SeaPlot Pro Version 1.05 B7 and up
Microsoft Windows XP, Microsoft Windows 2000 and Microsoft Windows Vista 

RECOMMENDED COMPUTER SPECIFICATIONS

Intel® Pentium® Dual Core Processor 1.8 GHz
1024 MB of DDR RAM
GeForce 6 series 256MB
nVidia Video Card essential
80GB 7200 RPM Serial ATA Hard Drive
Screen Resolution 1280 x 1024

CONTACT INFORMATION

Piscatus Limited
Port Nelson
New Zealand
P +64 (0)3 545 7020
F +64 (0)3 545 7021
E info@piscatus.co.nz
W www.piscatus.co.nz

PISCATUS^{3D}
SUPERIOR SEABED VISION

